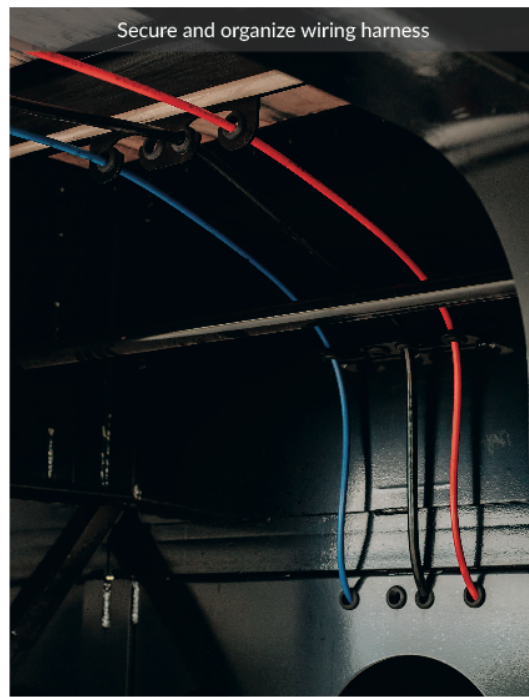




62" upper 8 / 41" lower deck



HD Springs assisted ramp



Secure and organize wiring harness



3/8" Steel rubrail



Front Steel tapered corners

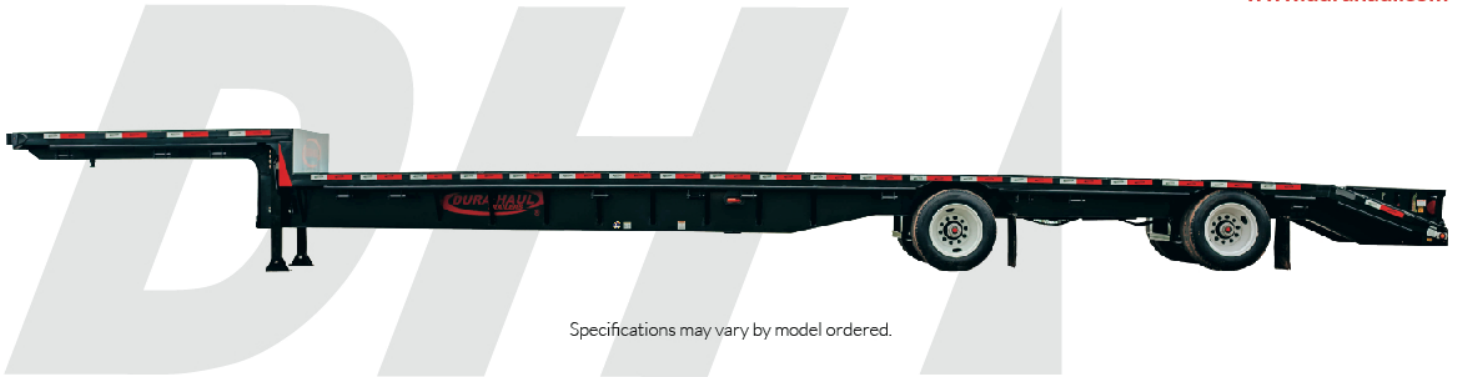


BLT BEAVER TAIL TRAILER



movingforward@durahaul.com
US toll free 844-877-6221

www.durahaul.com



Specifications may vary by model ordered.

- » **Capacity**
80,000 lbs GVWR
- » **Length**
48' / 53'
- » **Weight**
48' 13,330 lbs +/- 3%
53' 13,920 lbs +/- 3%
- » **Ramps**
DuraRamps
Spring assisted
Third ramp optional
- » **Upper Deck Length**
10' 6"
- » **Lower Deck Length**
48' - 33' 1" 53' - 38' 1"
- » **Upper Deck Height**
62"
- » **Lower Deck Height**
41"
- » **Width**
102" Overall
- » **Coupler Height**
48"
- » **King Pin**
2" Holland
Setting 24" or 18"
- » **Plate**
1/4"
- » **Main Beam**
27" High Tensile Steel
- » **Web**
Grade 80 High Tensile Steel
- » **Front Skirt**
Formed Steel with Tapered Corners
- » **Rear Skirt**
Formed Steel with Integral Stake Pockets
- » **Cross Members**
4" Steel I Beam on 12" centers
- » **Side Rail**
6" Steel Channel
- » **Rubrail**
3/8" x 2-1/2" Steel
- » **Stake Pockets**
Steel, External Mount, 24" on center with double pipe spools
- » **Floor**
1-1/8" Apitong Hardwood
- » **Lighting**
Lights Full DOT approved LED sealed lights
- » **Load Securement**
Sliding Winch C-track
- » **Mud Flaps**
Heavy Duty, White
- » **Suspension**
Heavy Duty Air Ride, 25,000 lbs capacity
- » **Axles**
Heavy Duty, 25,000 lbs capacity
- » **Landing Gear**
Jost - Heavy Duty, 2-speed Gear Drive, 160,000 lbs static load capacity
- » **ABS Brakes**
Wabco, 2S1M
- » **Parking Brakes all Axles**
- » **Brakes**
16 1/2" x 7" Quick Change
- » **Hubs**
Standard Cast, Oil lubricated, 10-stud unimount, hub piloted
- » **Brake Drums**
Standard Cast, outboard mount
- » **Wheels**
Hub piloted steel
- » **Tires**
22.5"
- » **Winches**
48' - 12 53' - 14
- » **Winch Track Steel Slide Driver Side**
- » **5-step painting process**
 - ✓ Steel grit blasting
 - ✓ Acid wash
 - ✓ Phosphate treatment
 - ✓ Heated silicone treatment
 - ✓ Powder coat finish



Options, color, and design may vary from model shown.