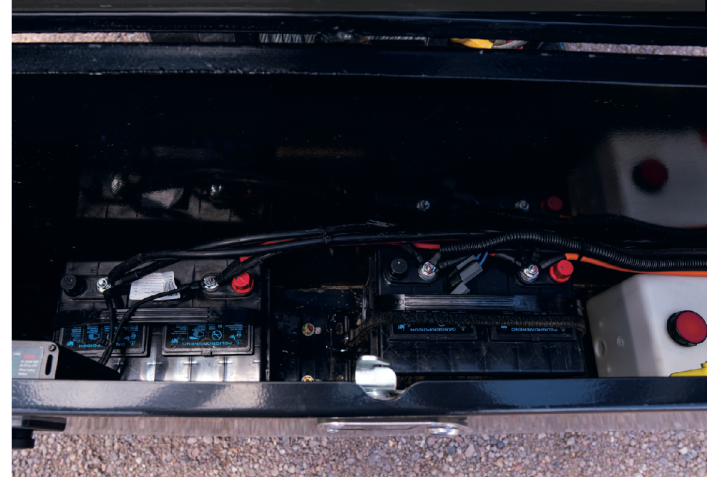




Heavy Duty hydraulic scissor lift



Lockable 2.85 cu. ft toolbox, charger, pump, 2 Dual batteries & remote control



Open door safety locks



17.5K Smittybilt X20 Wireless Winch



Greasable rollers, and Twix door locking system



ROLL OFF DUMPSTER



movingforward@durahaul.com
US toll free 844-877-6221

www.durahaul.com



5-step painting process:

- ☒ Sandblasting
- ☒ Acid wash
- ☒ Phosphate treatment
- ☒ Heated silicone treatment
- ☒ Powder coat finish



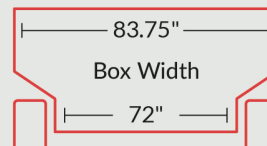
Weight
2359 lbs - Box
3594 lbs - Chassis



Capacity
13.4 yd3



Lift Angle
45°



HAUL WITH THE PROS.

Options, color, and design may vary from model shown.